

# Suite B - "The Plainsman"

**1,195 SF**

July 2007 / Scale: 1/8" = 1'-0"

**Option 1:**

**2 BEDROOMS  
2 BATHROOMS**

## FEATURE LIST

### Building:

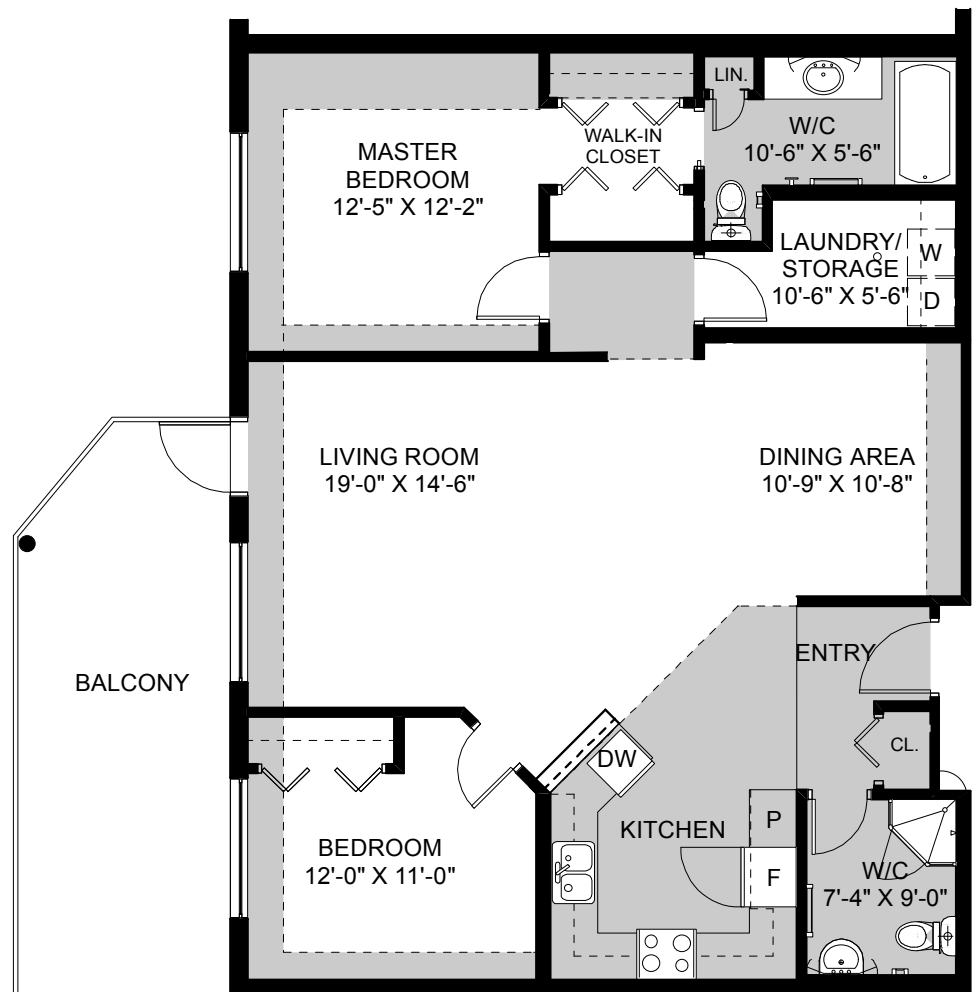
- Onsite Public Surface Parking
- Sprinklered Building
- Hollowcore / Masonry Construction
- Individual Heating and Cooling
- Pressurized Hallways
- Elevators
- Heated Underground Parkade
- Professionally Landscaped Grounds

### Suite Features:

- 9'-0" Ceilings
- Modern Kitchen Design
- Fridge / Stove / Dishwasher included
- In-Suite Storage
- Additional Suite Storage in Parkade
- Rough-in Internet / Cable
- Concrete Balconies
- Roof Terraces On Second Level
- Intercom Lobby Security System
- 2 Hour Design Time Provided to Personalize Your Home

### Common Areas:

- Pick-up Zone At Ground Level Entrance
- Carwash Bay in Parkade
- Recessed Suite Entrances
- Great Room on Main Floor
- Exercise Room



This drawing is for illustrative purposes only and may not be exactly as shown.  
 Square footages may vary with actual Strata Survey. Floor plans subject to change without notice.  
 July, 2007